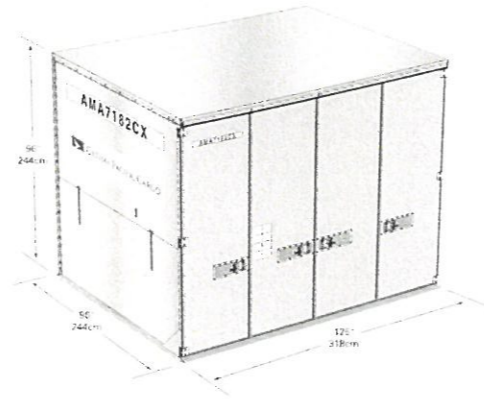
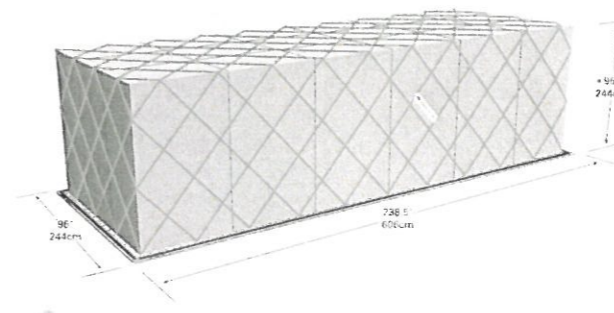


These are the Unit Load Devices (ULDs) that Cathay Pacific Cargo provides. Please visit www.cathaypacificcargo.com for detailed descriptions of each of the ULDs.

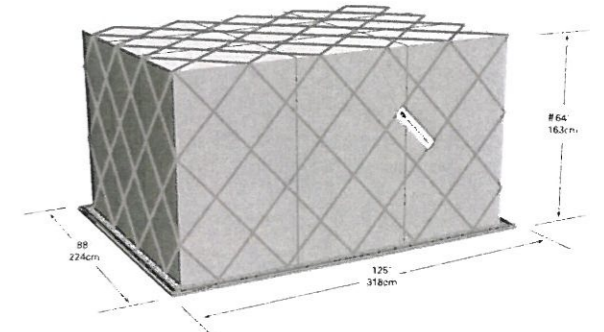
以下是國泰貨運提供的各式集裝箱。有關服務詳情，請瀏覽 www.cathaypacificcargo.com，並參考各款集裝箱的詳情。



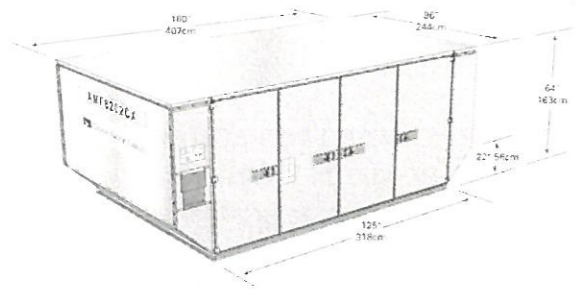
Type: CONTAINER - AMA
 ATA Code: M1
 Internal Volume : 621 cu. ft.
 : 17.58 mc
 Tare Weight : 477 kg
 Weight Limitation Inc. ULD Tare Weight : 6,804 kg
 Loadable Aircraft Type: 747F



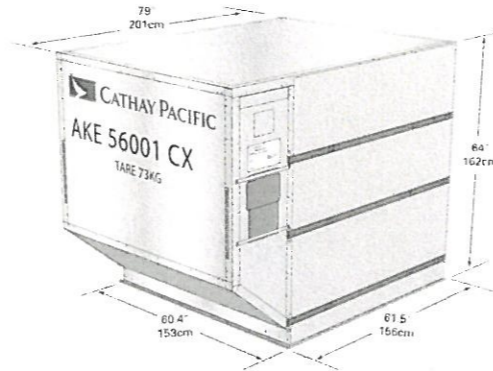
Type: PALLET - PGA
 Size - Base : 96" x 238.5"
 - Height : 96", **118"
 Tare Weight : 565 kg
 Weight Limitation Inc. ULD Tare Weight : 11,340 kg
 Loadable Aircraft Type: 747F



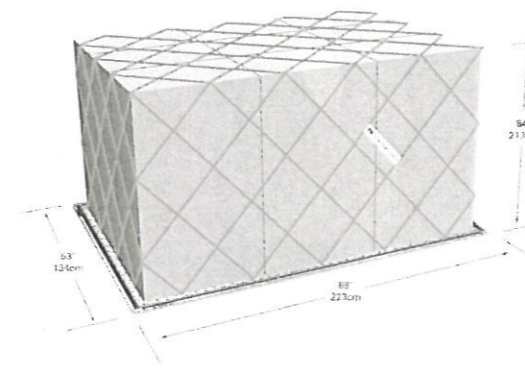
Type: PALLET - P1P, PAG
 Size - Base : 88" x 125"
 - Height : 96", 96", **118"
 Tare Weight: 114 kg
 Weight Limitation Inc. ULD Tare Weight : 4,626 kg (LD), 6,033 kg (MD)
 Loadable Aircraft Type: 747, 747F, 777, Airbus



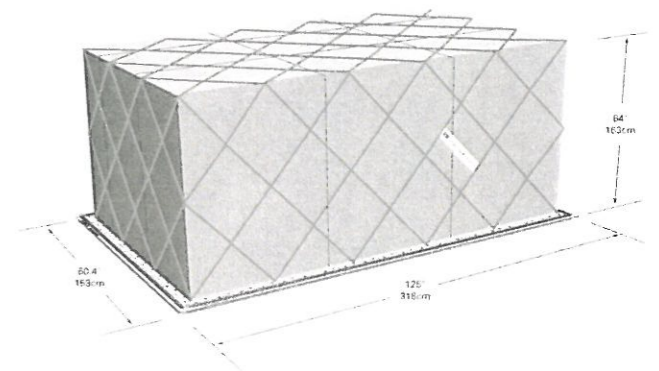
Type: CONTAINER - AMF
 Internal Volume : 516 cu. ft.
 : 14.6 mc
 Tare Weight : 315 kg
 Weight Limitation Inc. ULD Tare Weight : 5,035 kg
 Loadable Aircraft Type: 747, 747F, 777, Airbus



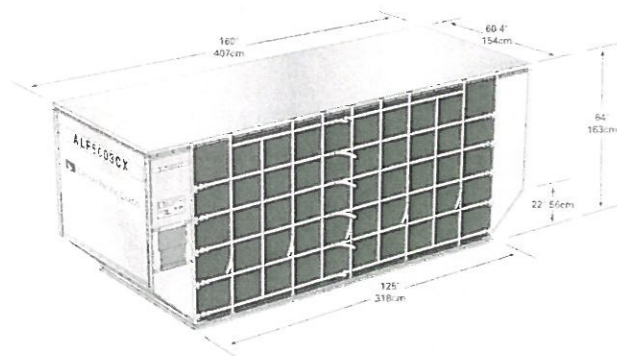
Type: CONTAINER - AKE
 ATA Code: LD3
 Internal Volume : 152 cu. ft. 4.3 mc
 Tare Weight (Fabric / Metal) : 73 kg/97 kg
 Weight Limitation Inc. ULD Tare Weight : 1,588 kg
 Loadable Aircraft Type: 747, 747F, 777, Airbus



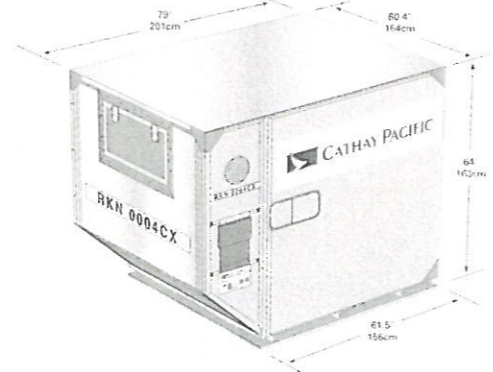
Type: PALLET - PEB
 Size - Base : 53" x 88"
 - Height : 84"
 Tare Weight : 55 kg
 Weight Limitation Inc. ULD Tare Weight : 1,800 kg (B-HH - 1,300 kg)
 Loadable Aircraft Type: 747F



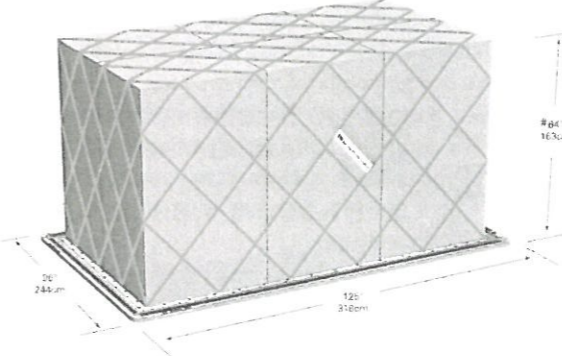
Type: PALLET - PLA
 Size - Base : 60.4" x 125"
 - Height : 64"
 Tare Weight : 103 kg
 Weight Limitation Inc. ULD Tare Weight : 3,175 kg
 Loadable Aircraft Type: 747, 747F, 777, Airbus



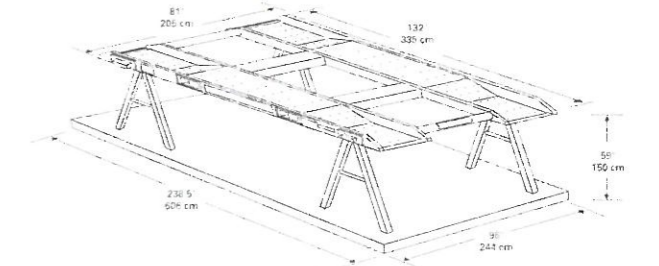
Type: ALF CONTAINER
 ATA Code: LD6
 Internal Volume : 310 cu. ft.
 : 8.78 mc
 Tare Weight : 157 kg
 Weight Limitation Inc. ULD Tare Weight : 3,175 kg
 Loadable Aircraft Type: 747, 747F, 777, Airbus



Type: COOLTAINER - RKN
 ATA Code: LD3
 Internal Volume : 125.41 cu. ft.
 : 3.55 mc
 Tare Weight : 190 kg
 Weight Limitation Inc. ULD Tare Weight : 1,588 kg
 Loadable Aircraft Type: 747, 747F, 777, Airbus



Type: PALLET - PMC, PQP, P6P
 Size - Base : 96" x 125"
 - Height : 96", 96", **118"
 Tare Weight : 120 kg
 Weight Limitation Inc. ULD Tare Weight : 5,035 kg (LD), 6,804 kg (MD)
 Loadable Aircraft Type: 747, 747F, 777, Airbus



Type: CAR RACK - VZA, VRA
 Size : Fitted on PGA 20 ft. Pallet
 Max Width for Lower Car : 81" / 205 cm
 Max Centre Height for Lower Car : 59" / 150 cm
 Max Wheel Base : 312 cm
 Tare Weight : 319 kg
 (2 trestles: 139 kg, Platform: 180 kg)
 Weight Limitation Inc. ULD Tare Weight : 2,500 kg (Upper Car), 9,300 kg (Max Gross Weight of Pallet)
 Loadable Aircraft Type: 747F Upper Deck